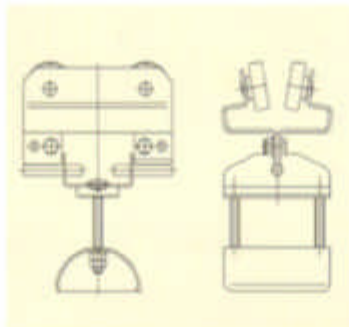


Cable trolley program 315



The **Wampfler cable trolley program 315** has been especially developed for Jib cranes and crane main trolleys in many different markets. Its simple but very sturdy construction of galvanized steel with crowned rollers and swivel cable support has been especially designed for flat cables with a loop weight of up to 165 lbs. The maximum traveling speed is 262 fpm.



The **cable trolley program 315** has been designed for indoor use and on selected tapered flange beams between S3 and S6 x 12.5.

As with all Wampfler cable trolley programs the 315 Program is complemented by a wide range of accessories!



Cable trolley



End clamp

Towing trolley



Technical details Cable trolley program 315

Rollers:
Sealed ball bearing roller of galvanized steel

Load capacity:
max. 165 lb.

Operating temperature:
-22°F to 176°F




Travel Speed:
Max. 262 ft/min

Material:
Chassis:
galvanized steel
Cable support:
hot-dipped zinc-coated
galvanized steel
Fasteners:
galvanized steel

Cable trolley program 315

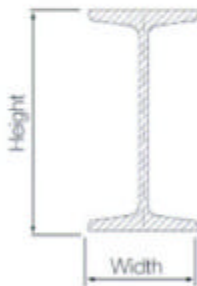
Specifications and variations

Variations and dimensions

	Cable trolley	Support Ø in mm	Length in mm	Support width in mm	Clamping width in mm	Max. clamping height in mm
	031550 -140x70	80 (3.14")	140 (5.5")	100 (3.9")	70 (2.75")	45 (1.77")
	031550 -140x130	80 (3.14")	140 (5.5")	160 (6.3")	130 (5.1")	45 (1.77")
	End clamp	Support Ø in mm	Length in mm	Support width in mm	Clamping width in mm	Max. clamping height in mm
	031540 -140x70	80 (3.14")	140 (5.5")	100 (3.9")	70 (2.75")	45 (1.77")
	031540 -140x130	80 (3.14")	140 (5.5")	160 (6.3")	130 (5.1")	45 (1.77")
	Towing trolley	Support Ø in mm	Length in mm	Support width in mm	Clamping width in mm	Max. clamping height in mm
	031560 -140x70-01	80 (3.14")	200 (7.9")	100 (3.9")	70 (2.75")	45 (1.77")
	031560 -140x130-01	80 (3.14")	200 (7.9")	160 (6.3")	130 (5.1")	45 (1.77")
	Control unit trolley	Support Ø in mm	Length in mm	Support width in mm	Clamping width in mm	Max. clamping height in mm
	031590 -140x70	80 (3.14")	On request	100 (3.9")	70 (2.75")	45 (1.77")
	031590 -140x130	80 (3.14")	On request	160 (6.3")	130 (5.1")	45 (1.77")

Beam types

Type	Standard	Height in mm	Width in mm
S3x5.7	American Standard	76.2 (3.0")	58.2 (2.33")
S4x7.7	American Standard	101.6 (4.0")	67.6 (2.66")
S5x10	American Standard	127 (5.0")	76.2 (3.00")
S6x12.5	American Standard	152.4 (6.0")	84.6 (3.33")
INP 120	DIN 1025 T1	120 (6.30")	58 (2.28")
INP 140	DIN 1025 T1	140 (5.51")	66 (2.60")
INP 160	DIN 1025 T1	160 (6.30")	74 (2.91")
INP 180	DIN 1025 T1	180 (7.09")	82 (3.23")
JIS 100x75x5	JIS G 3192	100 (3.94")	75 (2.95")
JIS 125x75x5.5	JIS G 3192	125 (4.92")	75 (2.95")
JIS 150x75x5.5	JIS G 3192	150 (5.91")	75 (2.95")
102x45	Australian Standard	102 (4.02")	45 (1.77")
102x76	Australian Standard	102 (4.02")	76 (2.99")
127x64	Australian Standard	127 (5.00")	64 (2.52")
152x76	Australian Standard	152 (5.98")	76 (2.99")



Wampfler, Inc.

8091 Production Drive
 Florence, Kentucky 41042-3096
 Phone: +1 859 814 2100
 Fax: +1 859 814 2110
 wampfler.usa@wampfler.com
 www.wampfler.com

